



Llywodraeth Cymru
Welsh Government

www.cymru.gov.uk

‘ExChange: Gofal & Addysg’ ‘ExChange: Care & Education’

Stephen Gear

Llywodraeth Cymru

Welsh Government

26 Ebrill 2017

26 April 2017

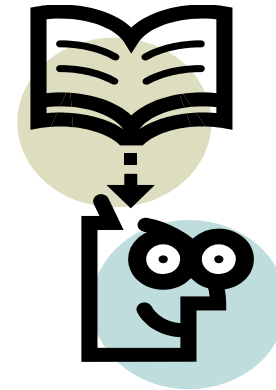
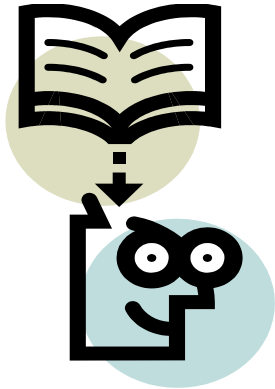
stephen.gear@wales.gsi.gov.uk

Creu Perthnasau a meithrin Cryfder

Building Relationships and Resilience

Y dirwedd yng Nghymru

The landscape in Wales



Cyfrifiad Plant mewn Angen yng Nghymru 2016

Plant sy'n derbyn gofal

Y Cyfnod Sylfaen	2015 = 64%	2016 = 64%	Dim newid
Cyfnod Allweddol 2	2015 = 64%	2016 = 66%	+ 2 bwynt canran
Cyfnod Allweddol 3	2015 = 48%	2016 = 57%	+ 9 pwynt canran
Cyfnod Allweddol 4	2015 = 18%	2016 = 23%	+ 5 pwynt canran

Disgyblion yng Nghymru

Y Cyfnod Sylfaen	2015 = 87%	2016 = 87%	Dim newid
Cyfnod Allweddol 2	2015 = 88%	2016 = 89%	+ 1 pwynt canran
Cyfnod Allweddol 3	2015 = 84%	2016 = 86%	+ 2 bwynt canran
Cyfnod Allweddol 4	2015 = 58%	2016 = 60%	+ 2 bwynt canran

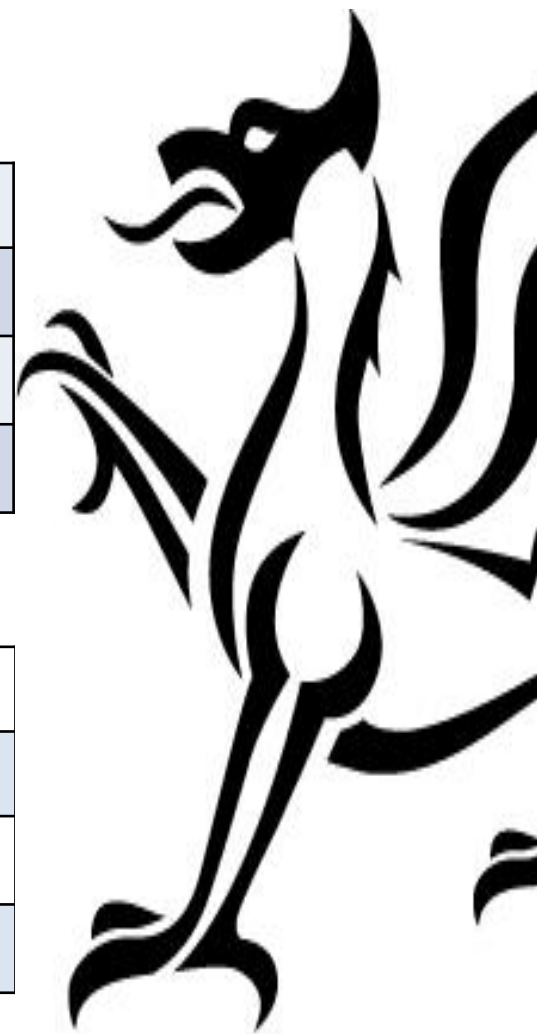
Wales Children in Need Census 2016


Looked after children

Foundation phase	2015 = 64%	2016 = 64%	No change
Key Stage 2	2015 = 64%	2016 = 66%	+ 2 percentage points
Key Stage 3	2015 = 48%	2016 = 57%	+ 9 percentage points
Key Stage 4	2015 = 18%	2016 = 23%	+ 5 percentage points

Pupils in Wales

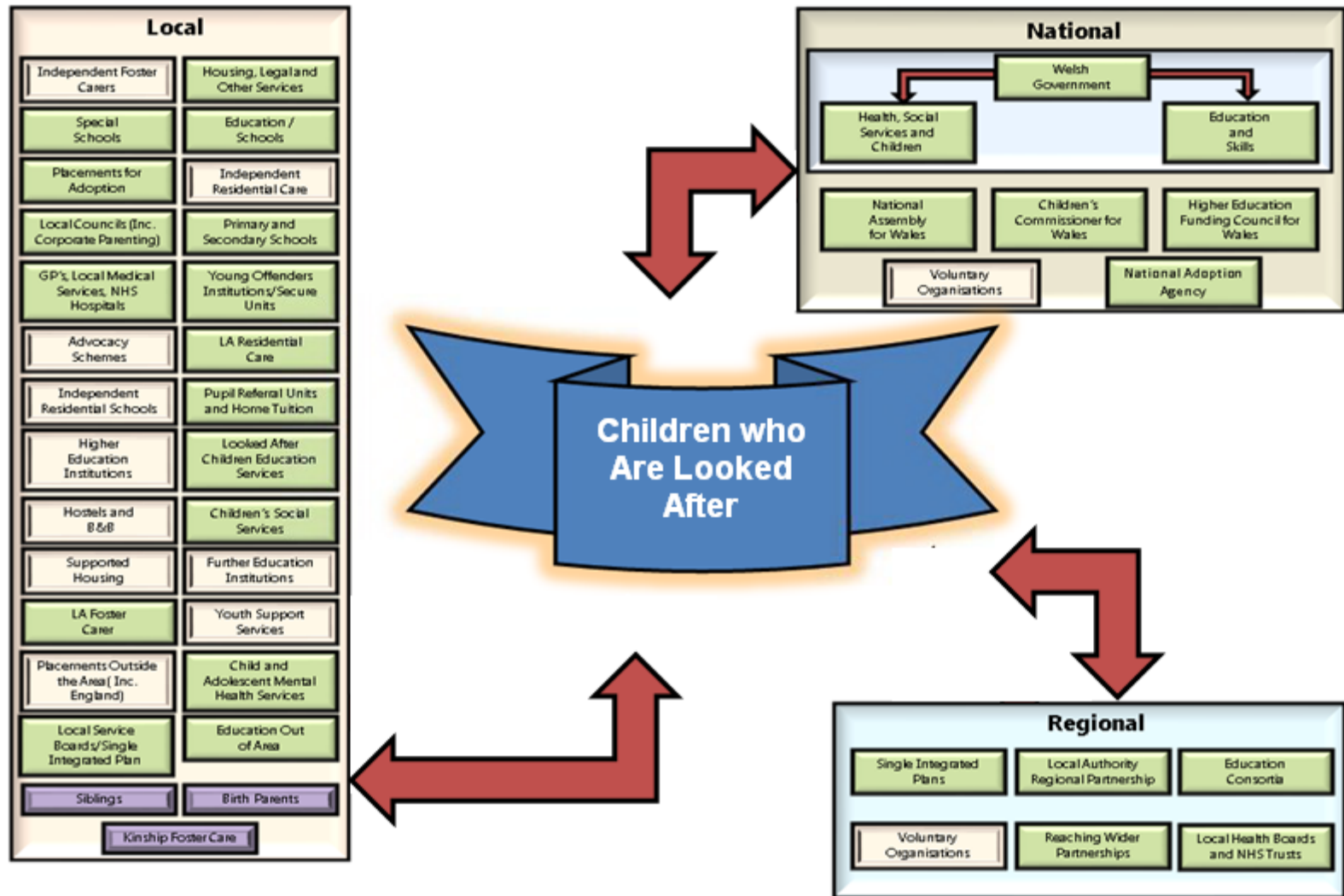
Foundation phase	2015 = 87%	2016 = 87%	No change
Key Stage 2	2015 = 88%	2016 = 89%	+ 1 percentage point
Key Stage 3	2015 = 84%	2016 = 86%	+ 2 percentage points
Key Stage 4	2015 = 58%	2016 = 60%	+ 2 percentage points



A paved road with a white curb on the left and double yellow lines on the right, winding through a dense forest. Sunlight filters through the trees, creating a warm, golden glow. The text is overlaid in the upper left quadrant.

Y Strategaeth - Ein Taith The Strategy - Our Journey

Children and Young People Entering Care – Agencies and Relationships



Strategaeth Llywodraeth Cymru

Welsh Government strategy

- *Codi uchelgais a chyrhaeddiad addysgol plant sy'n derbyn gofal – cyhoeddwyd 28 Ionawr 2016*

Cymraeg –
<http://gov.wales/topics/educationandskills/schoolhome/deprivation/educational-attainment-of-looked-after-children/?lang=cy>

- *Raising the ambitions and educational attainment of children who are looked after in Wales – published 28th January 2016*
- English –
<http://gov.wales/topics/educationandskills/schoolhome/deprivation/educational-attainment-of-looked-after-children/?lang=en>

Strategaeth Llywodraeth Cymru

Welsh Government strategy

- Y prif themâu
 - Arweinyddiaeth effeithiol – rolau a chyfrifoldebau
 - Creu partneriaethau effeithiol a chydweithredu
 - Addysgu a dysgu effeithiol – gan gynnwys trefniadau pontio gwell ar gyfer opsiynau gyrfa ôl-16
- Main themes
 - Effective leadership – roles and responsibilities
 - Building effective partnerships and collaboration
 - Effective teaching and learning – including better transition to post 16 career options

Strategaeth Llywodraeth Cymru

Welsh Government strategy

- Cefnogaeth mewn 3 maes pwysig arall
- Defnyddio data'n well
- Gwneud y trefniadau cyllido'n fwy cadarn
- Gwrando ar leisiau plant sy'n derbyn gofal – i wella'r modd rydym yn rhoi cymorth iddynt
- Supported by 3 other important areas
- Making better use of data
- Strengthening funding arrangements
- Listening to the voices of looked after children – to improve the way we support them

Y cynnydd yn erbyn y cynllun gweithredu

Progress against the action plan

- Beth a gyflawnwyd?
- What has been achieved?
- Pa waith sy'n parhau?
- What work is ongoing?
- Beth nesa?
- What next?

‘ExChange: Gofal & Addysg’
‘ExChange: Care & Education’
Diolch – Thank you



Llywodraeth Cymru
Welsh Government

www.cymru.gov.uk

Stephen Gear

Llywodraeth Cymru

Welsh Government

26 Ebrill 2017

26 Ebrill 2017

Stephen.gear@wales.gsi.gov.uk